

## WBP Tool GeoJSON Requirements

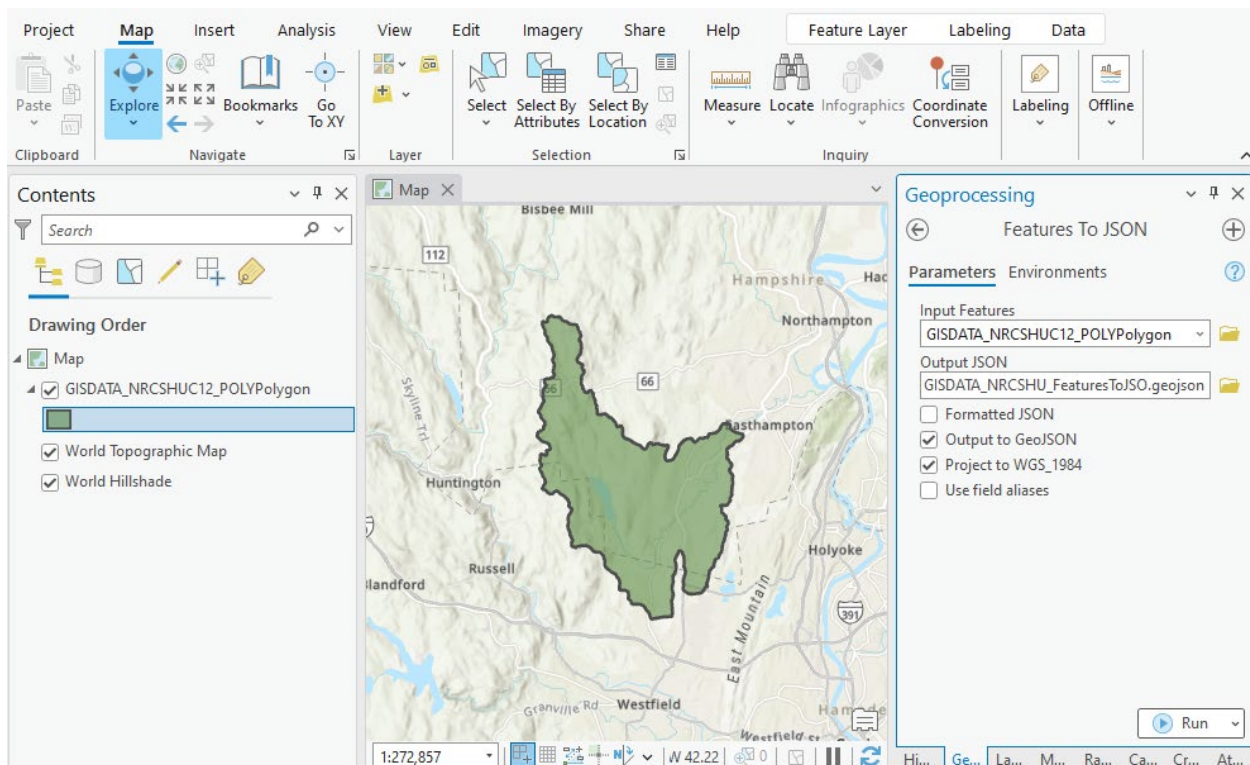
Web-based mapping services that run in the browser require spatial data to be in GeoJSON format so that the data can be parsed, projected to the right coordinates, and displayed on top of a basemap. Thus, spatial data uploaded by users of the MassDEP Watershed-Based Plan Tool must be in GeoJSON format and projected in WGS\_1984 (EPSG:4326).

There are many options for preparing your data in this format, including desktop tools like ArcMap & ArcGIS Pro (Esri), QGIS (a free and open-source GIS platform), and online/web-based conversion utilities.

## Export Shapefile to GeoJSON with ArcGIS Pro

The workflow below describes an example of exporting a HUC12 catchment shapefile from the National Hydrography Dataset into GeoJSON format using ArcGIS Pro.

1. Under “View” → “Geoprocessing” → “Conversion Tools”, Use the “**Features to JSON**” tool in the Conversion Toolbox to export your shapefile or feature class to GeoJSON format.
2. This conversion tool supports two JSON format specifications, Esri JSON (default) and GeoJSON. The Massachusetts WBP tool requires the GeoJSON format, so two options must be set:
  - “Output to GeoJSON” – this will make sure the output is in GeoJSON format.
  - “Project to WGS\_1984” – this option will make sure that the coordinates of the polygon are in the correct projection for the WBP Tool to load and render on the web map.
3. Click “Run.”



For more information on the **Features to JSON** tool, please visit [Features To JSON \(Conversion\)—ArcGIS Pro | Documentation](https://pro.arcgis.com/en/pro-app/latest/tool-reference/conversion/features-to-json.htm) (https://pro.arcgis.com/en/pro-app/latest/tool-reference/conversion/features-to-json.htm).